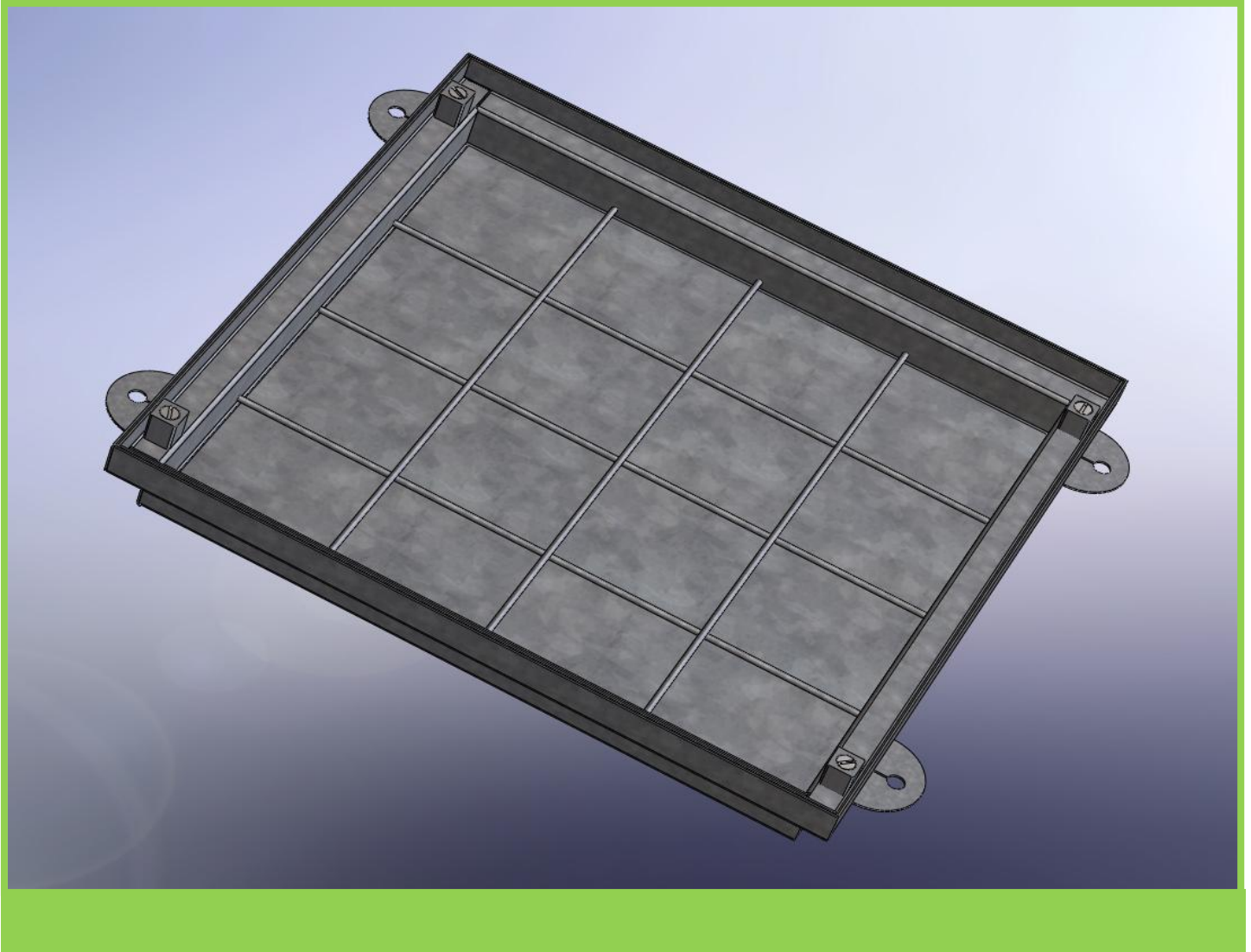




Tel: 01952 581430 | Fax: 01952 586141
www.manholes.co.uk | sales@manholes.co.uk

Fabweld Steel Products Ltd
Value and service for our customers through our people



FAB TRAY S10



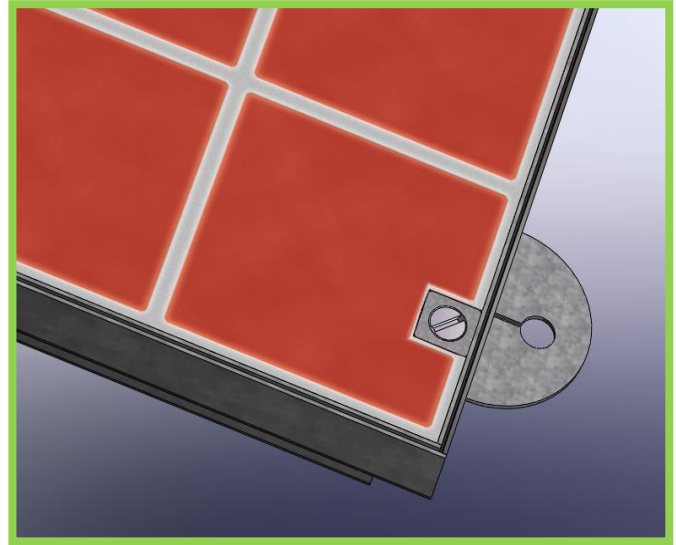
Certificate No: 1678



FAB TRAY S10

Features and Benefits


- Manufactured from high grade mild steel
- Recess can accommodate a variety of floor finishes to blend with surrounding area
- Suitable for internal & external applications where aesthetic finishes are important
- Neoprene sealed to provide airtight gasket
- Precision machined dual purpose M12 locking & lifting points deter unauthorised cover removal
- Ideal for all types of footwear
- Lifting points compatible with standard eye bolts to aid mechanical removal
- Load tested to FACTA Class B
- Hot Dip Galvanised to BS EN: ISO1461
- Manufactured in accordance with ISO:9001 quality system



Standard Clear Openings

Part Number	Clear Opening (mm)	Overall Size (mm) (Not inc Lugs)	Minimum Rebate Required (mm)	Unfilled Weight (kg)	Approx. Filled Weight (kg)	FACTA Load Class†
RET00050	300x300	380x380x80	90x90	5.14	28	B
RET00051	450x450	530x530x80	90x90	9.25	57	B
RET00052	600x450	680x530x80	90x90	11.65	73	B
RET00053	600x600	680x680x80	90x90	11.21	92	B
RET00223	675x675	755x755x80	90x90	13.34	113	B
RET00054	750x600	830x680x80	90x90	12.99	112	B
RET00056	750x750	830x830x80	90x90	15.99	134	B
RET00055	900x600	980x680x80	90x90	15.2	137	B
RET00017	1200x600	1280x680x80	90x90	20.84*	173*	B
RET00018	1220x675	1300x755x80	90x90	23.52*	196.3*	B

FACTA Classification Table

Guide	EN124 Comparison	Applicable SMWL	Applicable GLVW	Application
	B125	5.0 tonne	44 tonne	Pedestrian Precincts, Forecourts, Commercial Delivery & Parking areas

Accessories

- Lifting Key (manual lift): **COM00310**
 Replacement Locking Screw: **COM00056**
 M12 Threaded Lifting Eye (mechanical lift): **COM00215**
 High security screws available upon request

Bespoke

This product can be manufactured in a variety of loadings & configurations to meet individual customer requirements. For more information contact our sales team on **01952 581430** or **sales@manholes.co.uk**

NOTE *These are 2 part covers so the total weight is the combined weight of both covers
 †Load class figures assume that the cover is filled with fully cured concrete to Strength Class C40 or equivalent