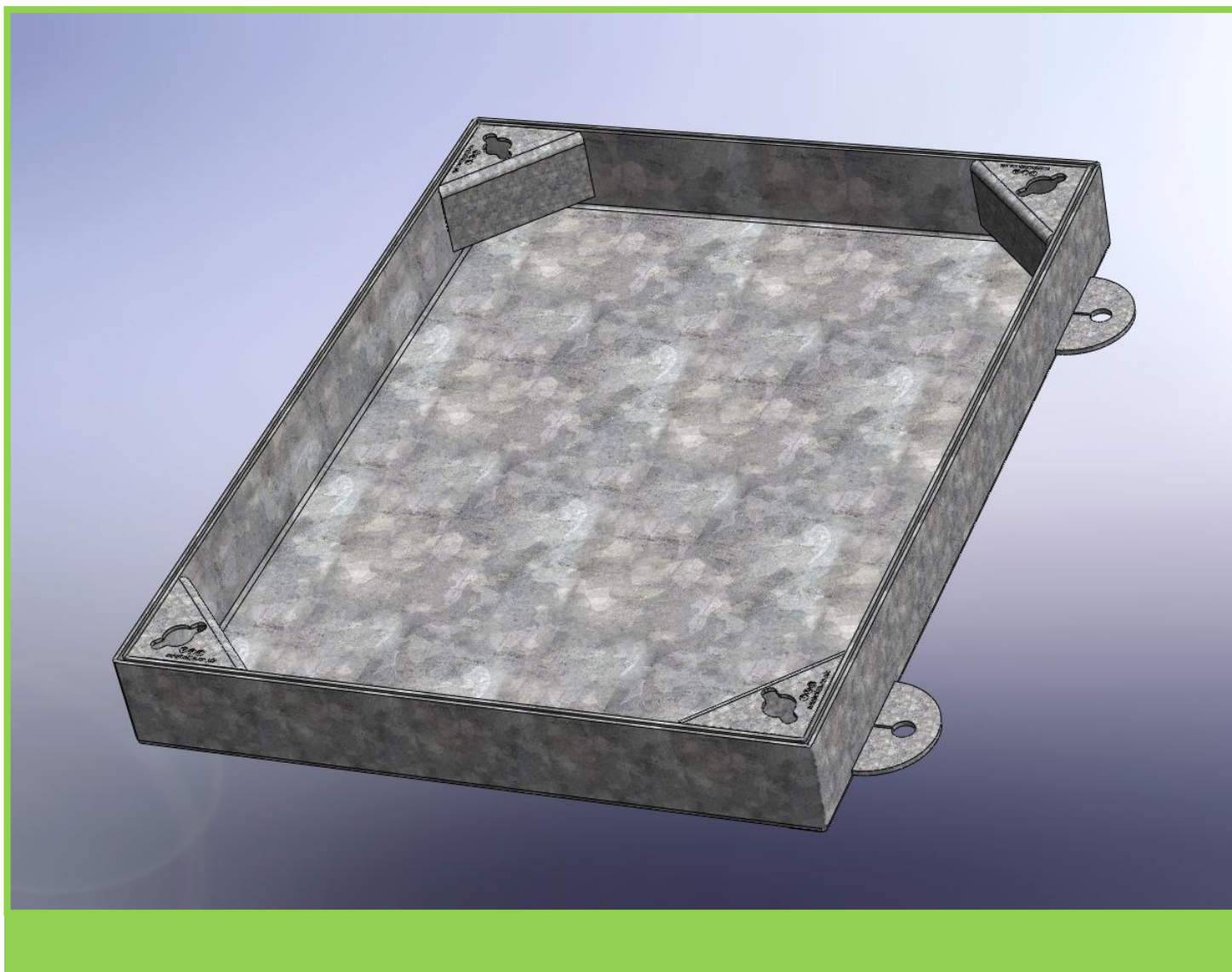




Tel: 01952 581430 | Fax: 01952 586141
www.manholes.co.uk | sales@manholes.co.uk

Fabweld Steel Products Ltd
Value and service for our customers through our people



FAB PAVE S10



Certificate No: 1678

Fabweld Steel Products Ltd

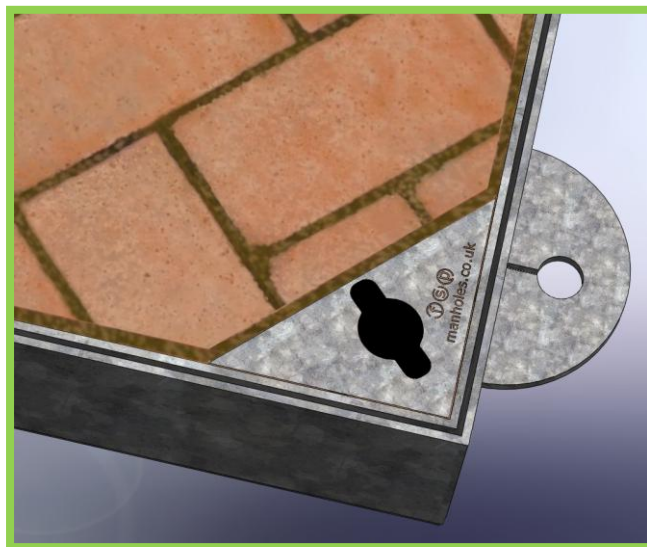
Unit D11-D13 Court 2000 | Bridgnorth Road | Madeley | Telford | Shropshire | TF7 4JB
VAT Number GB 594212341 | Registered Number 3675964



FAB PAVE S10

Features and Benefits

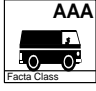
- Manufactured from high grade mild steel
- Ideal for driveways & similar applications
- 70mm recess can accommodate a range of infills to blend with surrounding area
- Robust keyway accepts industry standard lifting keys
- Tapered sides of covers facilitate easy removal of cover from frame
- Bolt fixing secures frame to maximise performance
- Lift & slide functionality makes cover suitable for one person removal
- Tested unfilled to FACTA class AAA
- Hot Dip Galvanised to BS EN: ISO1461
- Manufactured in accordance to ISO:9001 quality system



Standard Clear Openings

| Part Number | Clear Opening (mm) | Overall Size (mm) | Minimum Rebate Required (mm) | Unfilled Weight (kg) | Approx. Filled Weight (kg) | FACTA Load Class |
|-------------|--------------------|-------------------|------------------------------|----------------------|----------------------------|------------------|
| RBP00040 | 600x450 | 656x506x76 | 80x80 | 16.2 | 52.8 | AAA |
| RBP00050 | 600x600 | 656x656x76 | 80x80 | 20.0 | 69.0 | AAA |

FACTA Classification Table

| Guide | EN124 Comparison | Applicable SMWL | Applicable GLVW | Application |
|---|------------------|-----------------|-----------------|--|
|  | -- | 2.5 tonne | 10 tonne | Pedestrian/Cycle areas, Driveways, Patios, Delivery & Service areas, Shopping malls & Light Industrial areas |

Accessories

Lifting Key: **COM00048**
Plastic Keyway Protection Caps: **COM00182**
Frame Fixing Bolts: **COM00309**

Bespoke

This product can be manufactured in a variety of loadings & configurations to meet individual customer requirements For more information contact our sales team on **01952 581430** or **sales@manholes.co.uk**