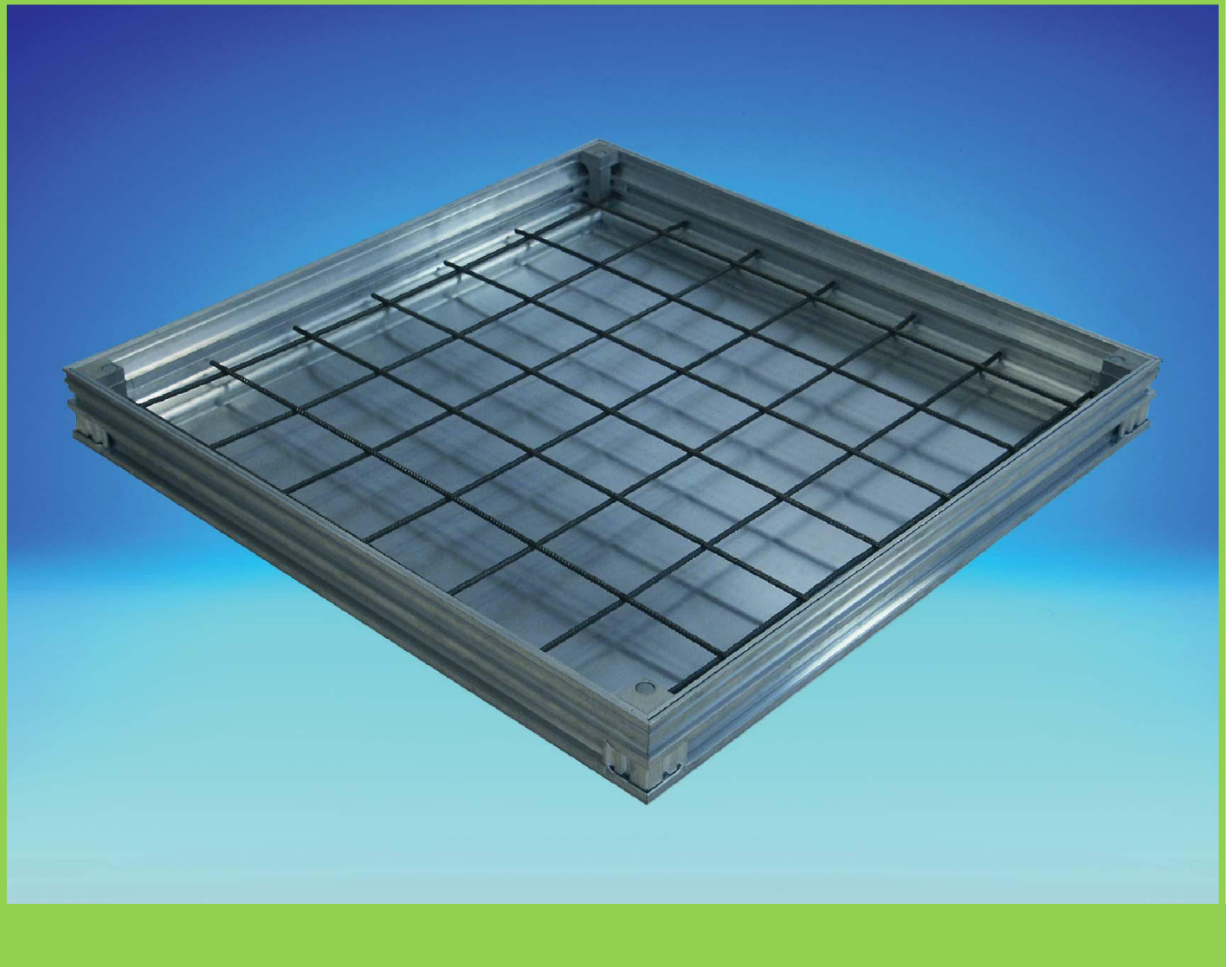




Fabweld Steel Products Ltd

Tel: 01952 581430 | Fax: 01952 586141
www.manholes.co.uk | sales@manholes.co.uk



Premier Stockist & Distributor of the ACO ALUCOVER



Certificate No: 1678

Fabweld Steel Products Ltd

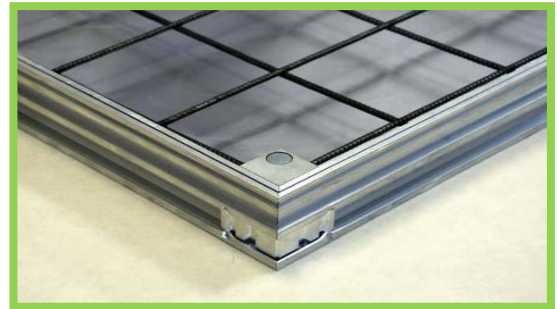
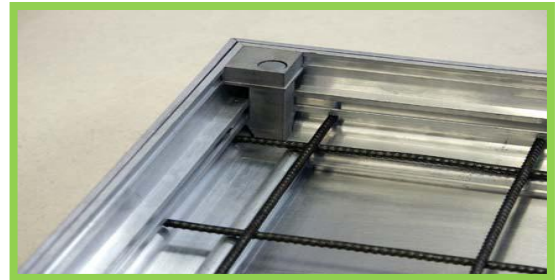
Unit D11-D13 Court 2000 | Bridgnorth Road | Madeley | Telford | Shropshire | TF7 4JB
VAT Number GB 594212341 | Registered Number 3675964

ACO ALUCOVER

High quality light weight unfilled recessed aluminium access covers for internal & external applications

Features and Benefits

- Double sealed single cover
- Integrated grit seal prevents full ingress of grit & slit between cover & frame
- 4-point locking with integrated low profile corner locking blocks. Captive replaceable brass nuts & stainless steel locking screws complete with protective caps provided
- 8mm x 100mm centres square steel reinforcement fabric mesh with captive supports ensures mesh remains with cover during site handling & installation
- Precision manufacture ensures minimal gap between frame & cover providing high quality, unobtrusive visual finish
- Low profile, 73mm overall depth frame for easy installation
- Advanced mechanical assembly process provides rigid frame & cover construction with no weld heat distortion
- 2 combined jacking & lifting keys supplied as standard for easy & convenient cover removal & replacement
- Supplied complete with installation instructions & packaging



Standard Clear Openings

Part Number	Clear Opening (mm)	Overall Size (mm) W x L x h	Unfilled weight	Approx Cover Weight (kg) Fully Filled	FACTA Load Class (50mm concrete infill)	FACTA Load Class (70mm concrete infill)
RET00817	300 x 300	398 x 398 x 73	4	13	AAA	B
RET00818	450 x 450	548 X 548 X 73	6	29	AA	B
RET00819	600 x 450	698 X 548 X 73	7	39	AA	B
RET00820	600 x 600	698 x 698 x 73	8	53	AA	B
RET00920	675 x 675	773 x 773 x 73	10	64	A	AAA
RET00821	750 x 600	848 x 698 x 73	10	66	AA	B
RET00823	750 x 750	848 x 848 x 73	11	83	A	AAA
RET00822	900 x 600	998 x 698 x 73	11	80	AA	B
RET00921	1000 x 1000	1098 x 1098 x 73	16	150	A	AA
RET00922	1220 x 675	1318 x 773 x 73	23	58	A	AAA

Accessories

- Additional lifting key: **COM00338**
- Replacement plastic screw caps: **COM00350**
- Replacement locking screw: **COM00066**
- All part coded products are ex stock

Note:

- Load class figures assume cover filled to depths shown with fully cured concrete to strength class C25/30