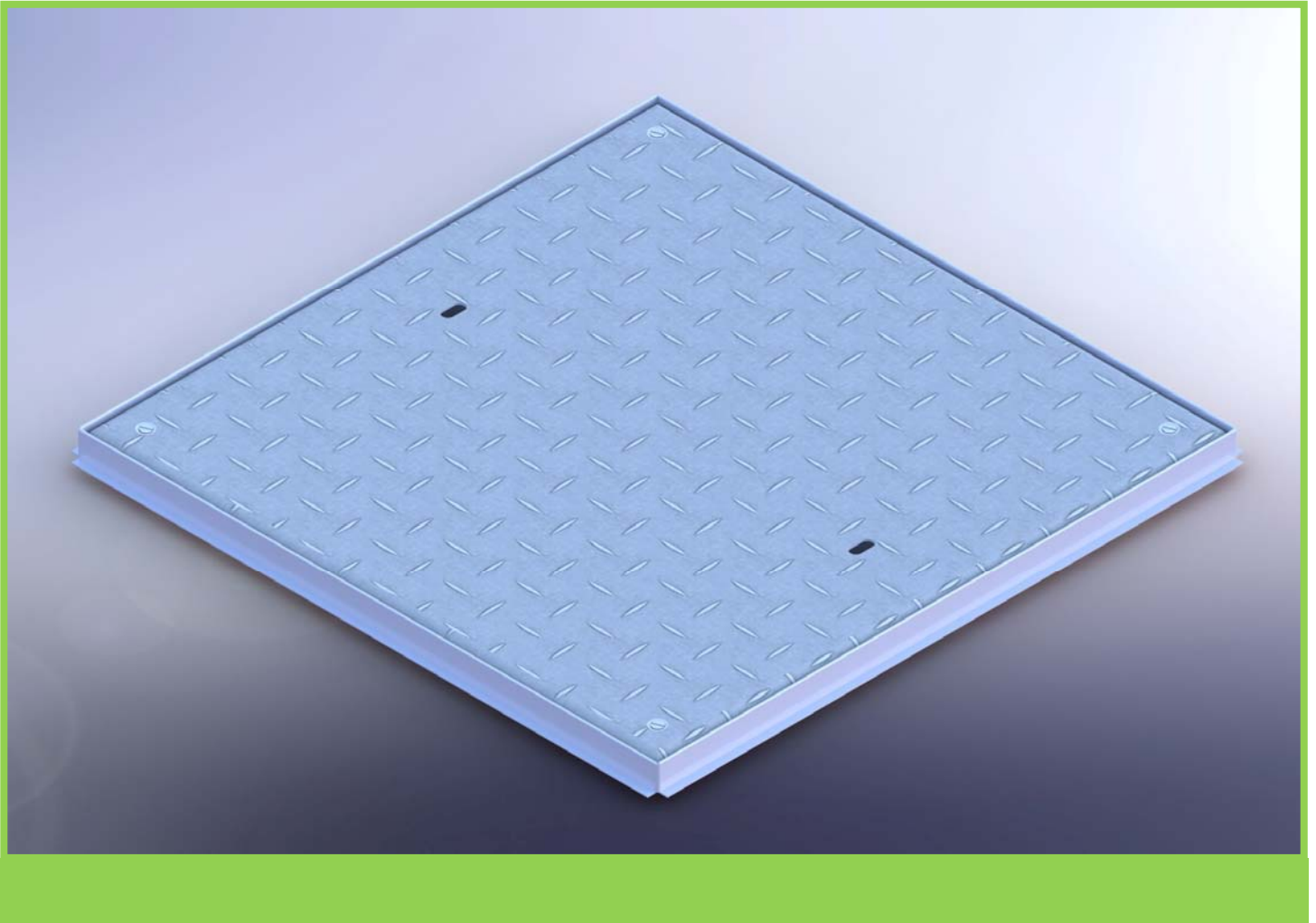




Tel: 01952 581430 | Fax: 01952 586141  
www.manholes.co.uk | sales@manholes.co.uk

Fabweld Steel Products Ltd  
Value and service for our customers through our people



## FAB TOP S10



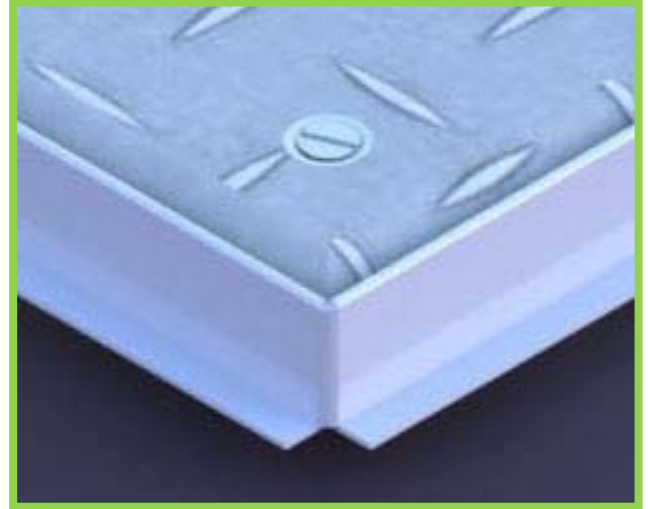
Certificate No: 1678



## FAB TOP S10

### Features and Benefits


- Manufactured from high grade mild steel
- Durbar Pattern Top
- Single groove for grease seal
- FACTA A Loading
- Locking flush fit screws
- Hot Dip Galvanised to BS EN: ISO1461
- Manufactured in accordance to ISO:9001 quality system



### Standard Range

Part Number	Clear Opening (mm)	Overall Size (mm)	Minimum Rebate Required (mm)	Weight (kg)	FACTA Load Class
SOT0000256	450x450	500x500x36	40x30	13.13	A
SOT0000257	600x450	650x500x36	40x30	14.65	A
SOT0000258	600x600	650x650x36	40x30	18.71	A
SOT0001699	675x675	725x725x36	40x30	20.33	A
SOT0000259	750x600	800x650x36	40x30	19.98	A
SOT0000261	750x750	800x800x36	40x30	24.71	A
SOT0000260	900x600	950x650x36	40x30	22.66	A
SOT0002590	1000x1000	1050x1050x36	40x30	39.33	A

### FACTA Classification Table

Guide	EN124 Comparison	Applicable SMWL	Application
	A15	0.6 tonne	Internal and external areas which can only be used by pedestrians or cycles

### Accessories

Lifting Key: **COM0000002**  
 Slotted Locking Screw : **COM0000054**

### Options

The FAB TOP S10 can be provided with a socket head or Fab Secure locking screws to suit security requirements

For more information contact our sales team on **01952 581430** or **sales@manholes.co.uk**