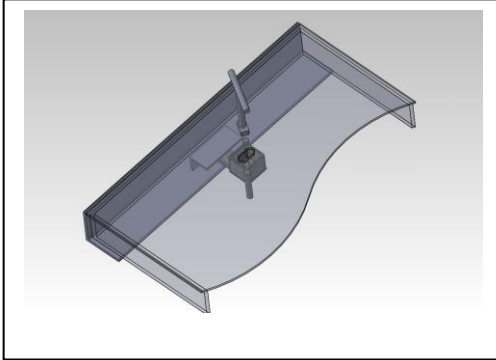




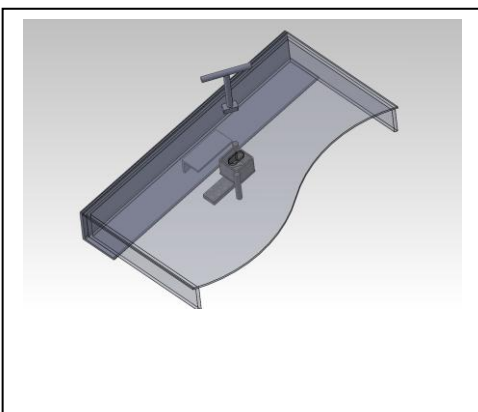
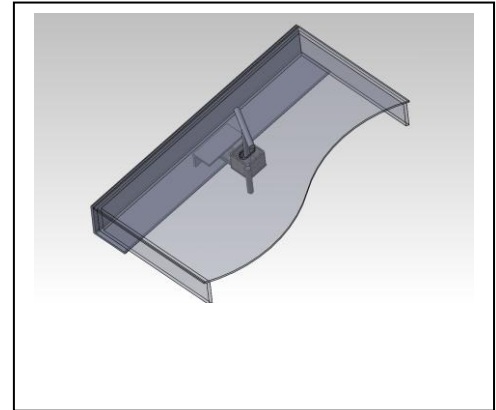
Fabweld Steel Products Ltd
Value and service for our customers through our people

Turnbuckle Locking Operating Procedure



Step 1 – firstly ensure that you have the turnbuckle lock and lift key (com0000278). Insert the supplied key in thru the 38x18mm lifting slot in the top face of the cover and ensure it locates over the top of the turnbuckle bolt.

Step 2 – When key is correctly located on to the turnbuckle bolt begin to undo the mechanism by turning the key in a anticlockwise direction while ensuring the key is under pressure to prevent the key slipping.



Step 3 – When the key has been rotated a number of times the catch on the under side of the mechanism will now become loose and move from under the locking catch on the frame. The access cover can now be opened by turning the key 90 degrees and pulling in a upward direction.

Fabweld Steel Products Ltd

Unit D11-D13 Court 2000 | Bridgnorth Road | Madeley | Telford | Shropshire | TF7 4JB
VAT Number GB 594212341 | Registered Number 3675964
Tel: 01952 581430 | Fax: 01952 586141
Web: www.manholes.co.uk | Email: sales@manholes.co.uk

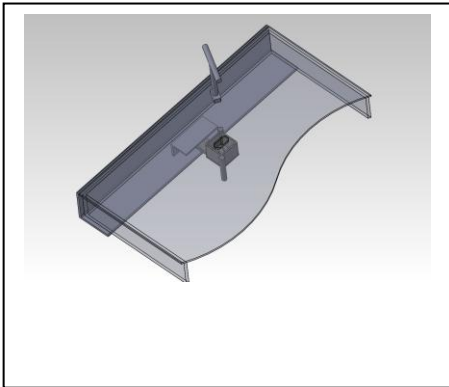
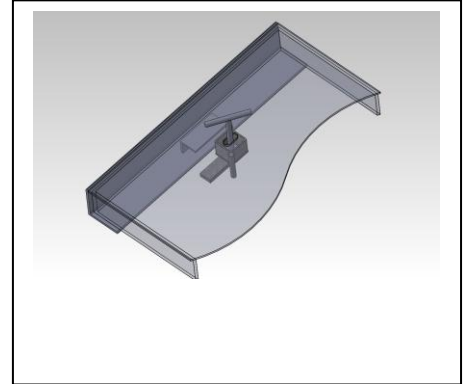


Certificate No: 1678



Fabweld Steel Products Ltd
Value and service for our customers through our people

Step 4 – To relock, the cover firstly has to be in a closed position. The key is then inserted though the 38x18mm slot in the cover and located over the turnbuckle bolt. When key is correctly located on to the turnbuckle bolt begin to lock the mechanism by turning the key in a clockwise direction while ensuring the key is under pressure to prevent the key slipping.



Step 5 - When the key has been rotated a number of times the catch on the under side of the mechanism will become tight and move under the locking catch on the frame. The access cover is now locked. Rotate the key so it sits parallel with the slot and pull in an upward direction to remove key from the cover.

Fabweld Steel Products Ltd

Unit D11-D13 Court 2000 | Bridgnorth Road | Madeley | Telford | Shropshire | TF7 4JB
VAT Number GB 594212341 | Registered Number 3675964
Tel: 01952 581430 | Fax: 01952 586141
Web: www.manholes.co.uk | Email: sales@manholes.co.uk



Certificate No: 1678