



Fabweld Steel Products Ltd

Product & Sealing Related FAQ's

Product Related FAQ's

How does the turnbuckle mechanism work?

The turnbuckle mechanism can only be locked and unlocked with the key provided (sub00004). It works by inserting the key through the slotted keyway and locating it onto the rectangular head of the turnbuckle pin. Turn the key in an anti-clockwise direction to unlock (this will be several turns), and then lift the cover using the same key. Ensure that the key is 90 degrees to the slot in the cover so that the key does not slip out when lifting. To lock the lid close ensuring that the turnbuckle is fully unlocked counter clockwise, locate the key onto the pin and proceed to turn in a clockwise position until the key is fully tightened.

N.B. The turnbuckle is designed to pull the cover tight to the frame either to compress the neoprene seal or to pull a torsion spring cover flat to the frame, for this reason the mechanism requires several turns to lock and unlock.

How do you remove a recessed cover with threaded lifting points from its frame?

Our recessed covers are supplied locked into the framework. To separate the cover from the frame simply remove the M8 countersunk or allen head screw from the top of the cover with a flat head screwdriver or allen key (depending on which type of screw is fitted). This will expose an M12 threaded lifting point, insert our M12 threaded lifting keys which have a specially tapered lead at the bottom (COM00310) and turn in a clockwise position. Continue to turn the key in a clockwise position until the cover rises from the frame breaking the seal and then proceed to lift the cover. To fit the cover back into its frame, simply reverse this process.

N.B. Under no circumstances is the cover to be removed from the frame until products has been fitted and the grouting has fully cured.

How do you recommend fitting ladders?

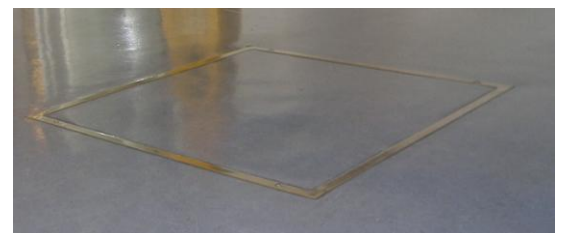
Ladders should always be fitted by a competent and certified site fitter. At FSP we offer a ladder fitting service throughout the UK at very competitive prices. To guarantee quality we only fit ladders manufactured within our plant. However our teams of highly skilled ladders fitters are fully certified and equipped to work in confined spaces and can also remove existing ladders or step irons from within a manhole chamber.

How can I identify a product which is made by FSP?

All of our FAB PAVE ranges have the FSP logo (as on our website) embossed on each of the corner lifting bosses that are welding to the cover.

Can the FAB TRAY S40 Stainless Steel Edged be fitted in a vinyl floor?

Vinyl is a flexible floor finish and notoriously difficult to fit around an access cover no matter what the cover design is like. A skilled floor finish fitter with vinyl experience can fit the covers to give a high quality finish as per the picture on the above



Fabweld Steel Products Ltd

Unit D11-D13 Court 2000 | Bridgnorth Road | Madeley | Telford | Shropshire | TF7 4JB
VAT Number GB 594212341 | Registered Number 3675964
Tel: 01952 581430 | Fax: 01952 586141
Web: www.manholes.co.uk | Email: sales@manholes.co.uk



Certificate No: 1678



Fabweld Steel Products Ltd

What is the difference between grade 304 and 316 stainless steel?

Grade 316	Grade 304
Offers excellent corrosion resistance and heat resistance at higher temperatures than 304	Excellent corrosion and heat resistance
Greater resistance to a wider array of chemicals than 304	304 chemical composition make it the most versatile stainless steel offering the best all-round performance stainless steel at low cost
Good oxidation resistance	304 can be subject to pitting, crevice and stress corrosion cracking when exposed to high chloride environments and heats beyond 50°C
Good mechanical properties	
Typical applications include: <ul style="list-style-type: none"> · Architecture for marine areas · Food preparation equipment · Laboratory benches & equipment · Swimming Pool areas · Salt water environment areas 	Typical applications include: <ul style="list-style-type: none"> • General architecture • Tanks • Containers • Catering equipment and utensils • Commercial & domestic kitchen construction • Use in chemical or petrochemical areas

Sealing Related FAQ's

Why use a neoprene seal over a grease seal on an access cover?

Grease seals are designed to prevent the escape of foul odours. They are only effective when the frame is filled with grease and in most cases this often does not happen making this sealing ineffective. Furthermore the grease needs to be re-applied each time the cover is removed which can become very costly and labour intensive.

A neoprene sealed cover offers the same benefits as a grease seal (with less maintenance) in terms of preventing the escape of foul odours, but requires a quick brush to remove loose debris before being placed back into the frame. This means that no further costs will be incurred from having to replace the seal unlike grease seals, and neoprene seals offer more effective performance over a longer period of time.

As the neoprene seal is factory installed it ensures fitness for purpose as soon as the cover arrives on site. As the neoprene is compressed under the weight of the lid a very effective air tight seal is created.

Fabweld Steel Products Ltd

Unit D11-D13 Court 2000 | Bridgnorth Road | Madeley | Telford | Shropshire | TF7 4JB
VAT Number GB 594212341 | Registered Number 3675964
Tel: 01952 581430 | Fax: 01952 586141
Web: www.manholes.co.uk | Email: sales@manholes.co.uk



Certificate No: 1678